



A charming mid terrace character cottage located in a tucked away position in the village of Wrotham Heath.

The accommodation comprises sitting room and kitchen / diner on the ground floor and two bedrooms and bathroom on the first floor. The property also benefits from exposed beams, exposed brick and stone fireplace, gas fired central heating, double glazing, parking and small decking area to the rear.

3 Lime Cottages, Maidstone Road

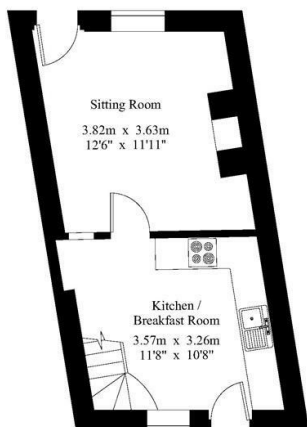
Wrotham Heath, Kent, TN15 7RX



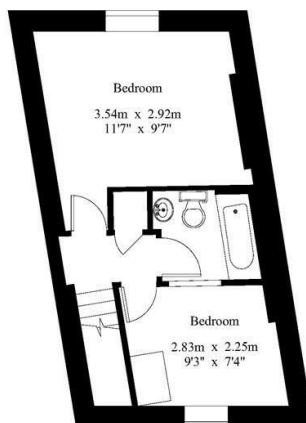
£1,200 PCM



Gross Internal Area : 53.3 sq.m (573 sq.ft.)



Ground Floor




First Floor



For Identification Purposes Only.
© 2016 Trueplan (UK) Limited (01892) 614 881

Energy Efficiency Rating

	Current	Potential
Very energy efficient - lower running costs		
(92 plus) A		84
(81-91) B		
(69-80) C		
(55-68) D	62	
(39-54) E		
(21-38) F		
(1-20) G		
Not energy efficient - higher running costs		
England & Wales		EU Directive 2002/91/EC
		

www.kings-estate-agents.co.uk



These particulars, whilst believed to be accurate are set out as a general outline only for guidance and do not constitute any part of an offer or contract. Intending purchasers should not rely on them as statements of representation of fact, but must satisfy themselves by inspection or otherwise as to their accuracy. No person in the firms employment has the authority to make or give any representation or warranty in respect of the property.

51 Western Road, Borough Green, Kent, TN15 8AN
T: 01732 885585

bglittings@kings-estate-agents.co.uk

kings-estate-agents.co.uk

